

Griffith City Council Organisation Structure

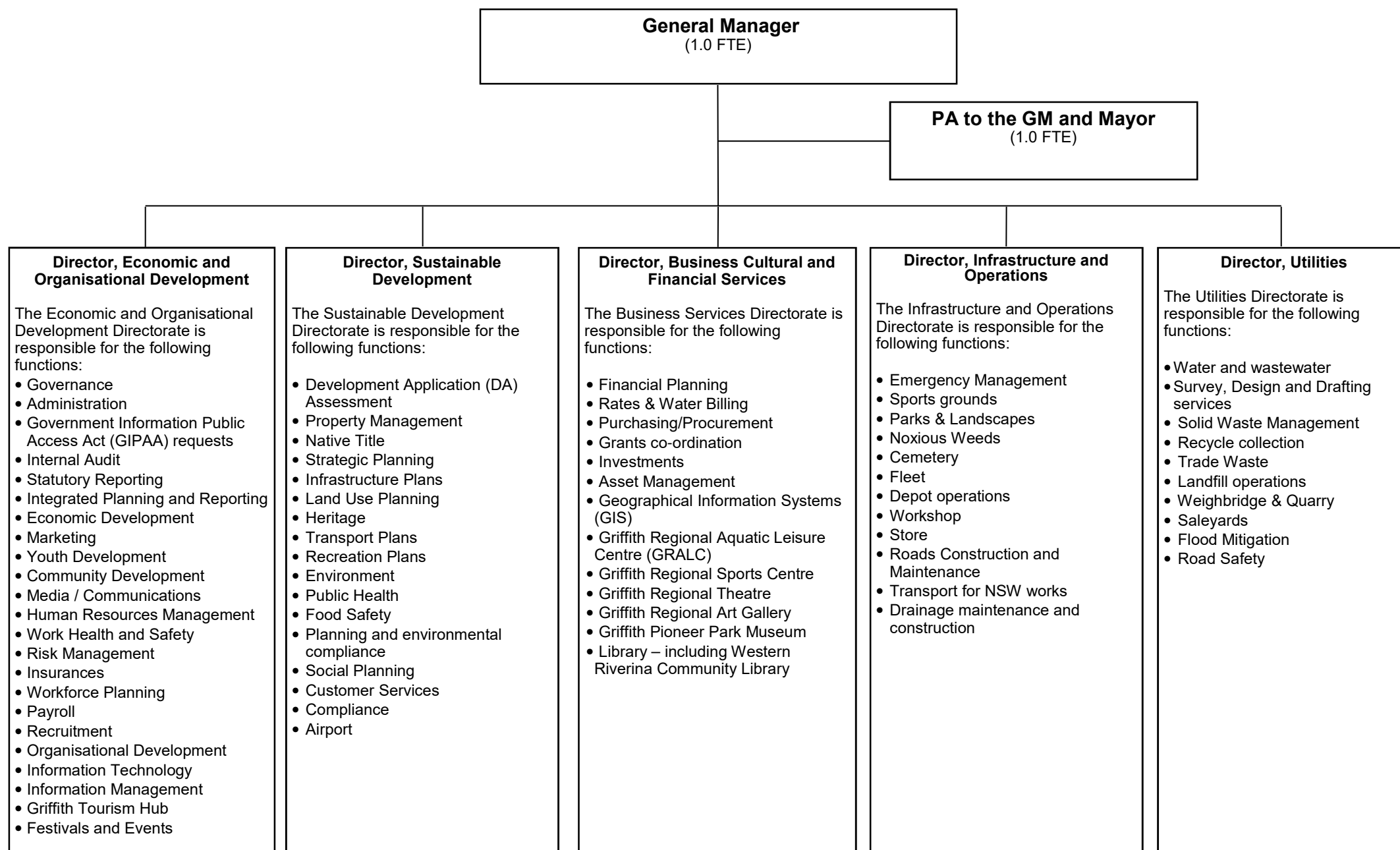


Figure 1

Economic and Organisational Development

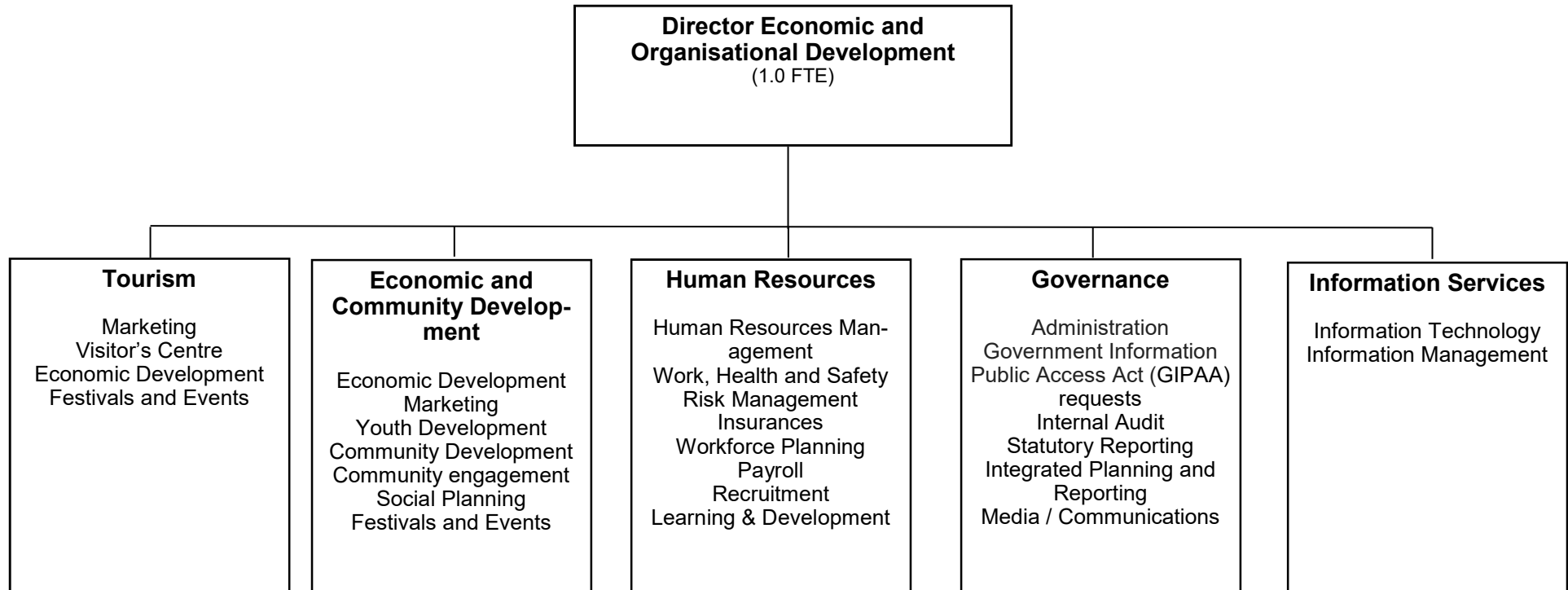
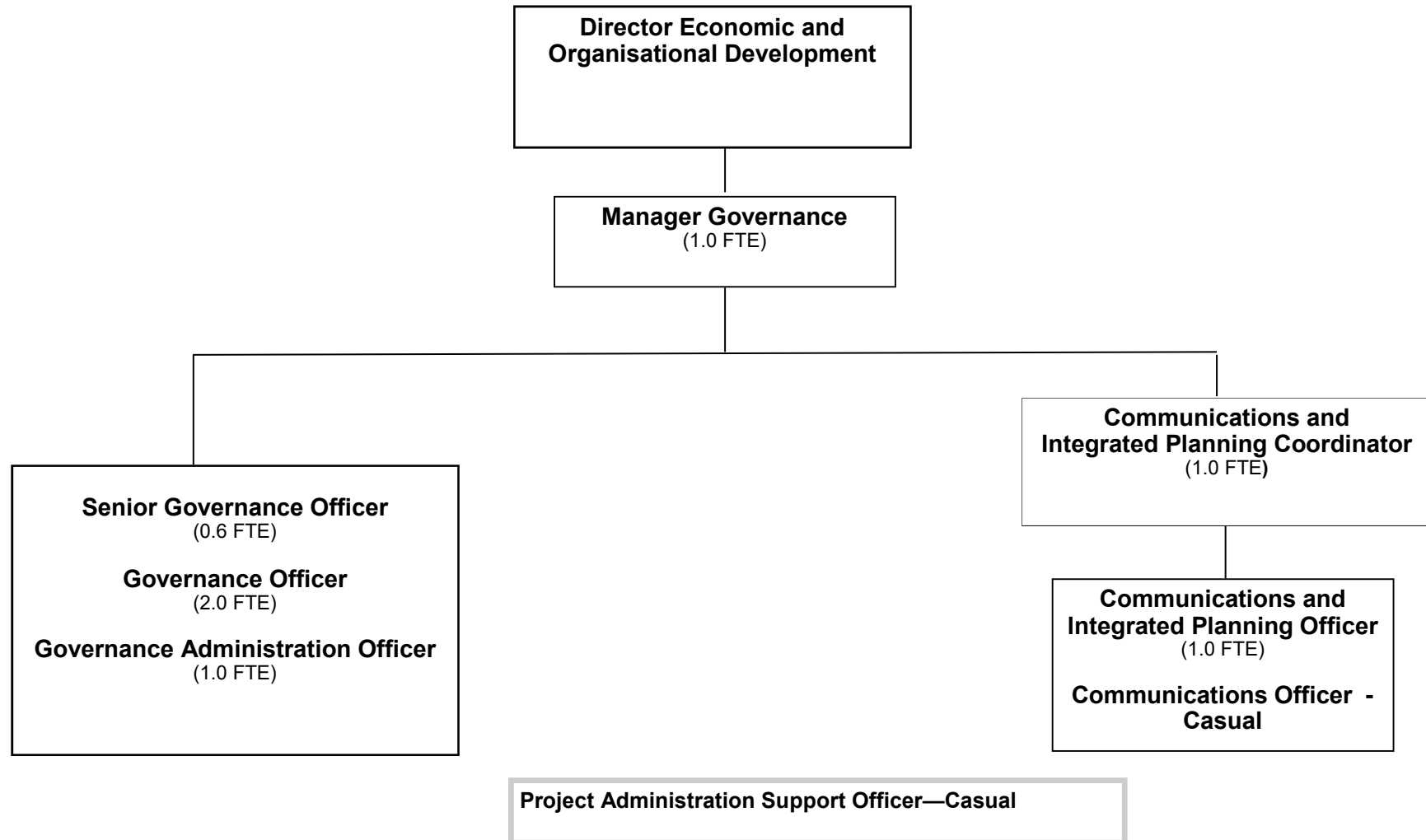


Figure 2

Economic and Organisational Development

(Governance, Communications and Integrated Planning)



Economic and Organisational Development (Information Services)

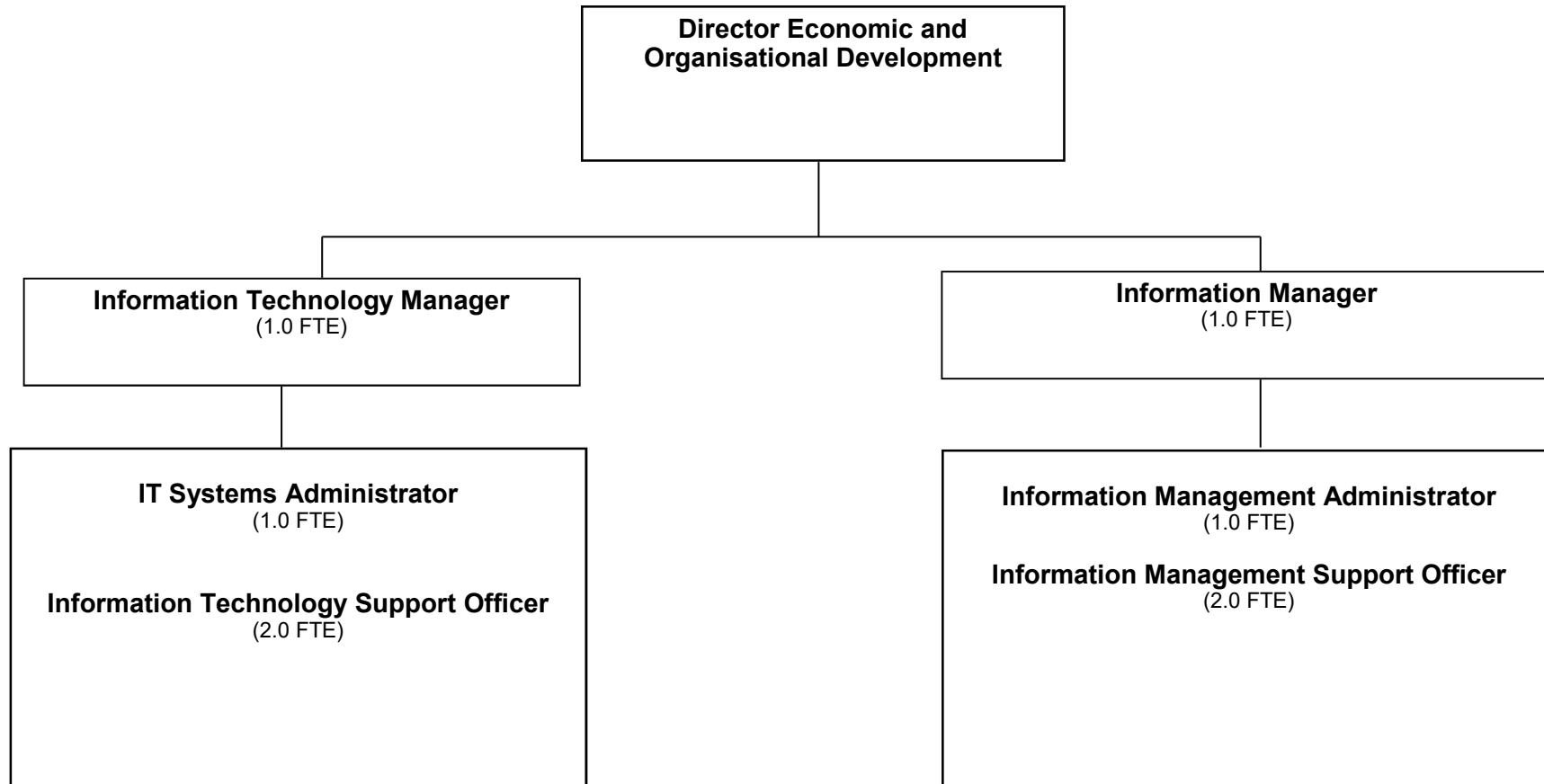


Figure 4

Economic and Organisational Development

(Human Resources & Workforce Planning)

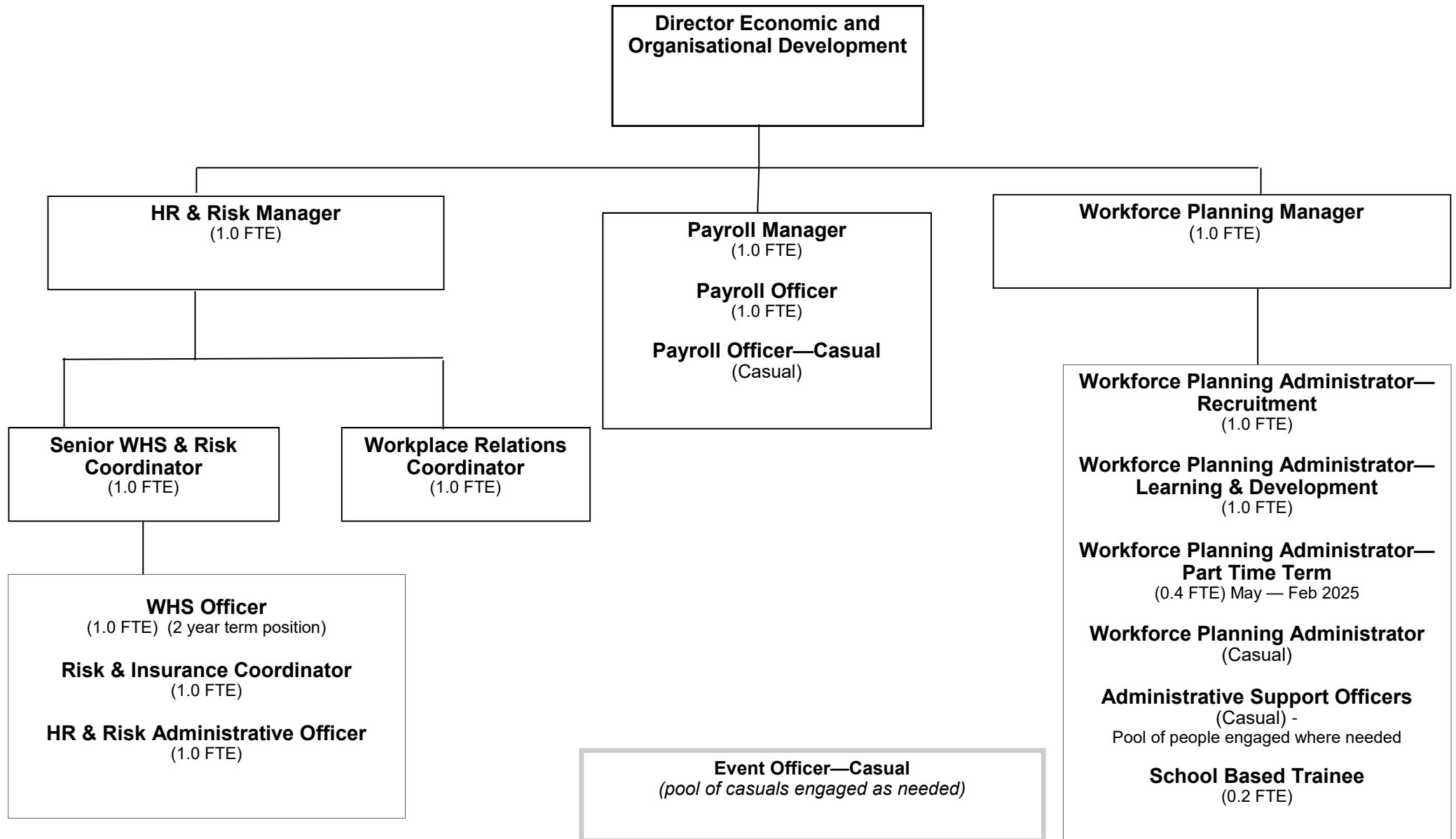


Figure 5

Economic and Organisational Development (Tourism and Economic Development)

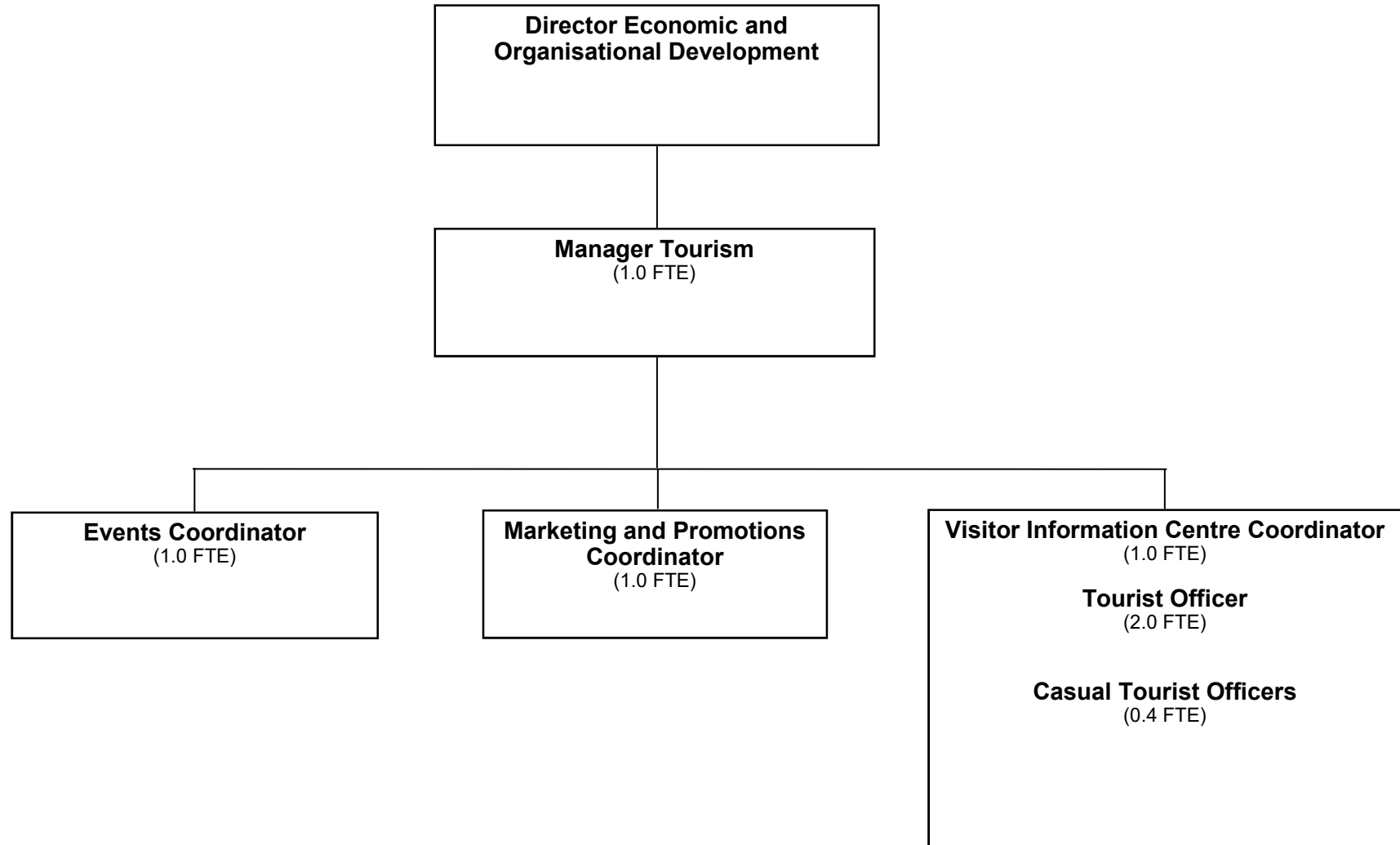
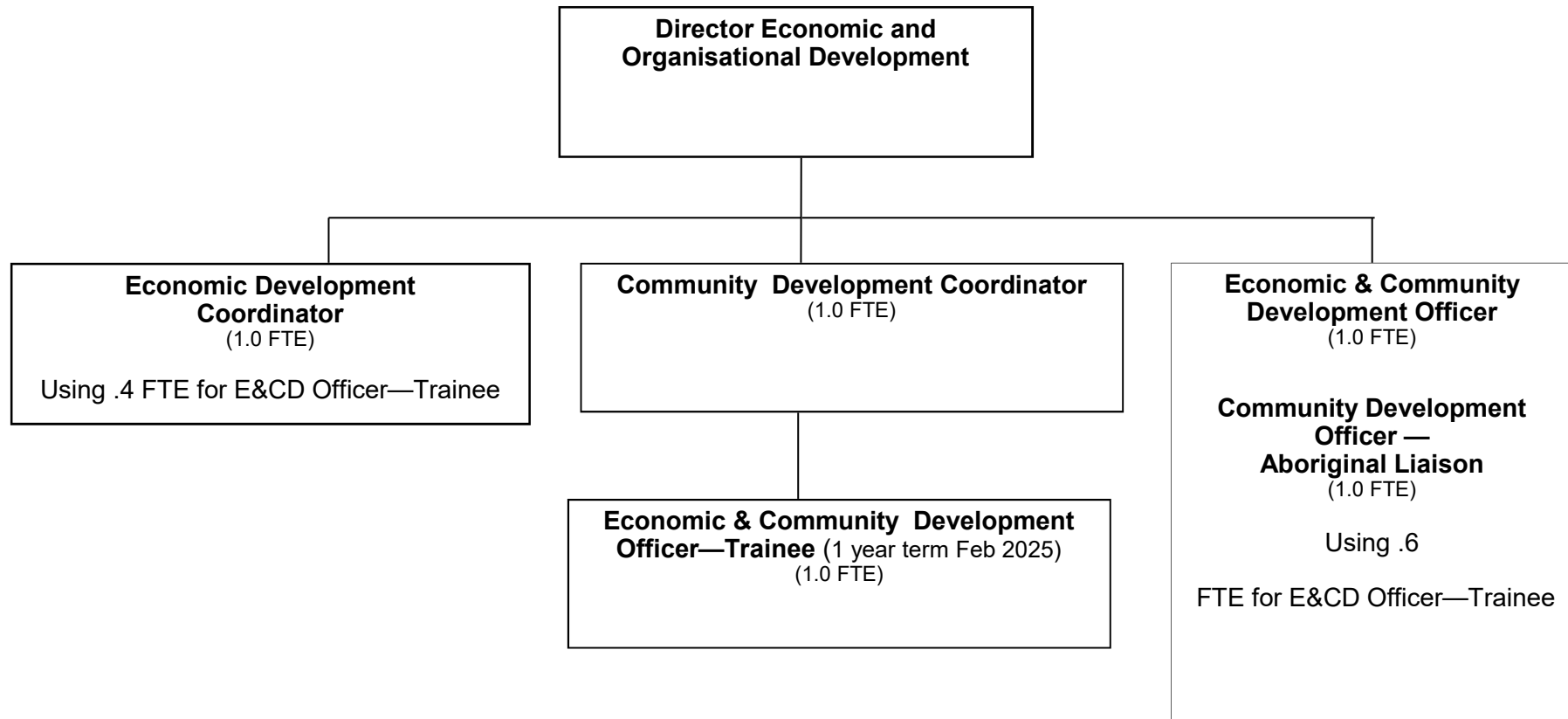


Figure 6

Economic and Organisational Development (Community Development)



Sustainable Development

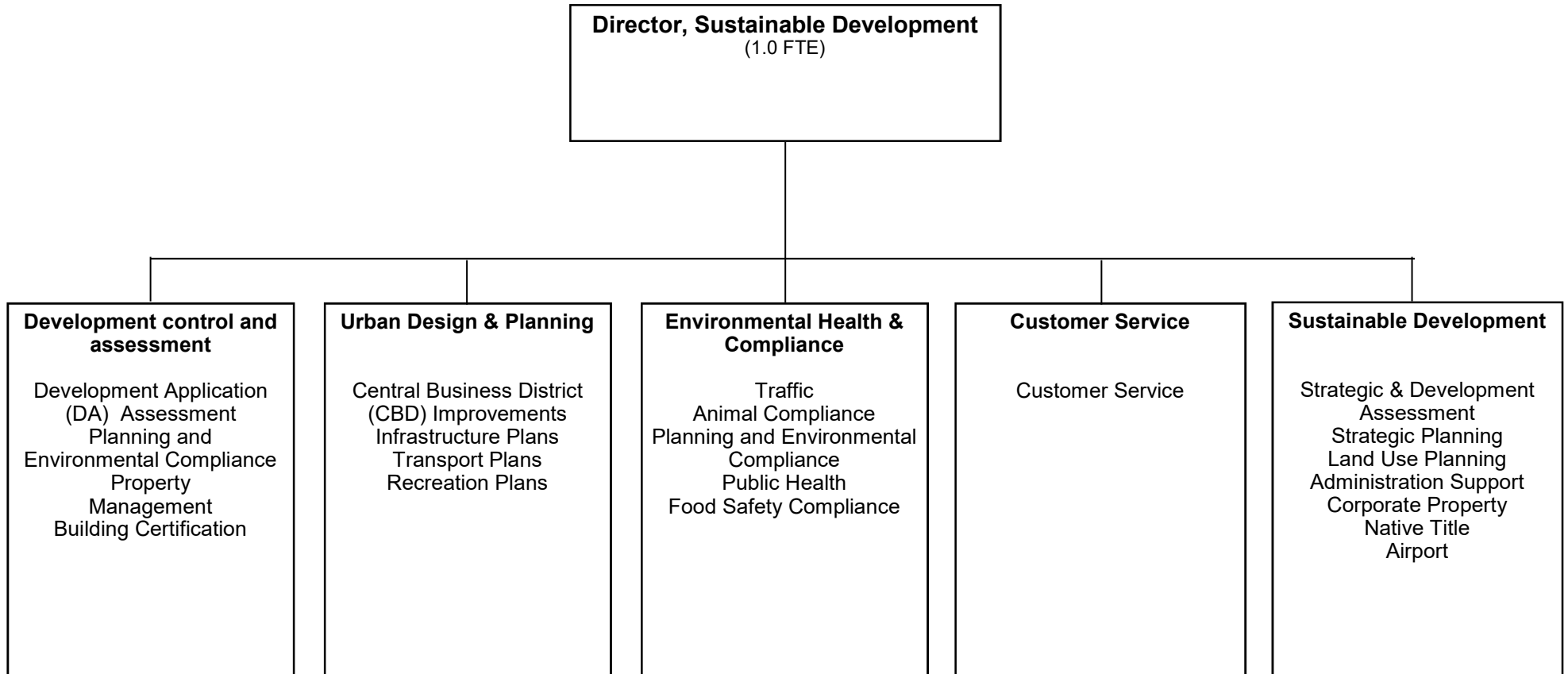


Figure 8

Sustainable Development

(Customer Service & Sustainable Development)

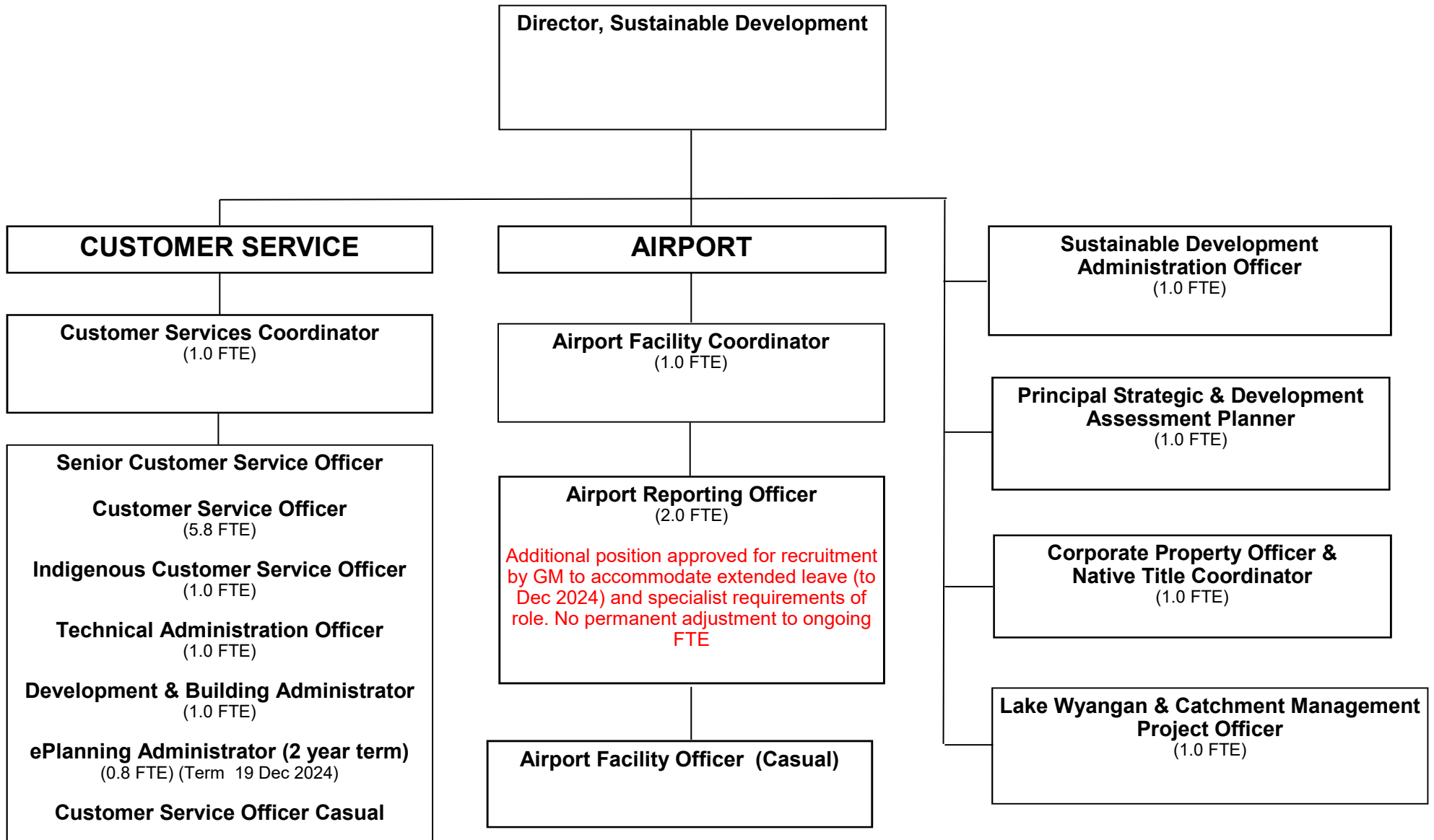
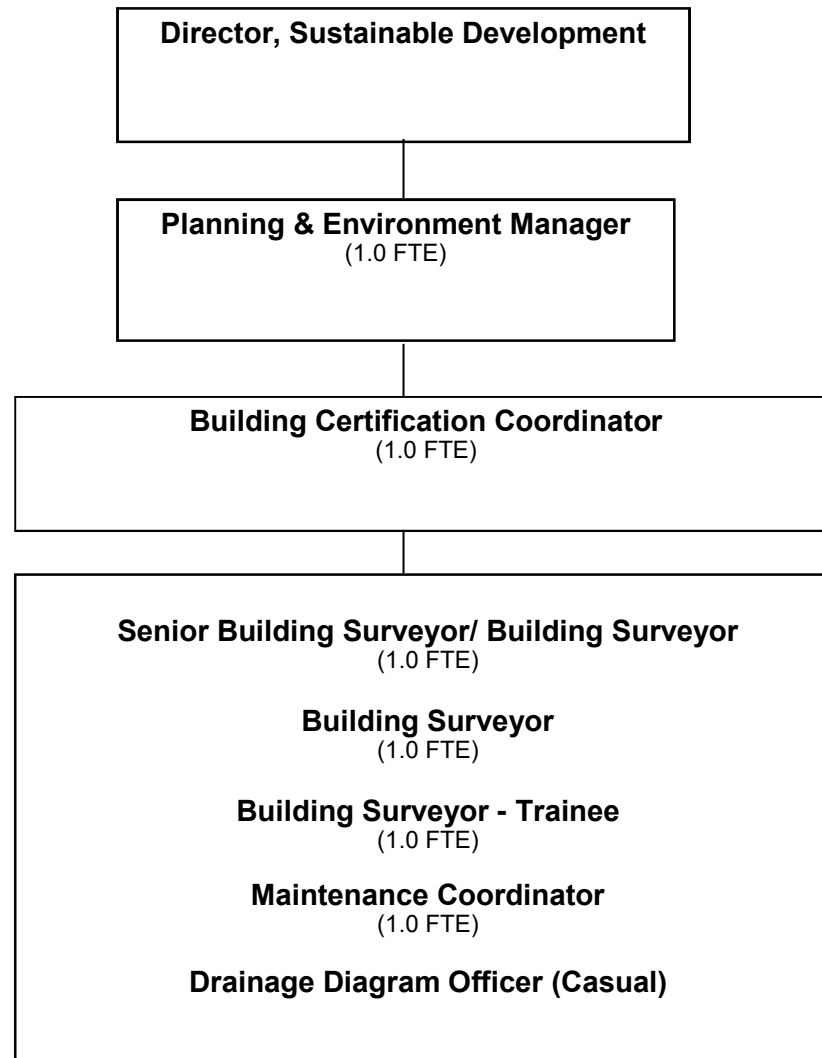


Figure 9

Sustainable Development (Development Control and Assessment)



Sustainable Development (Compliance)

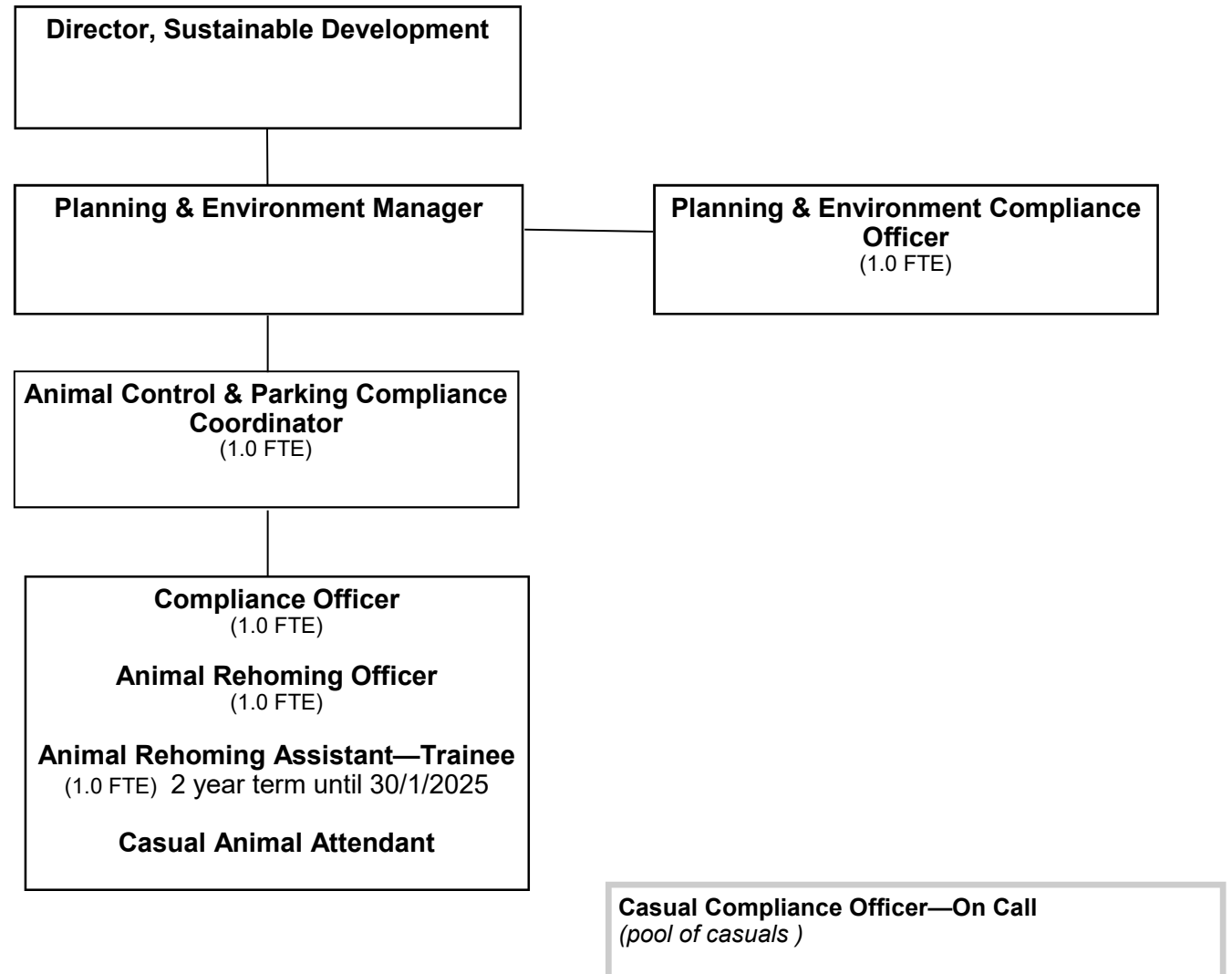
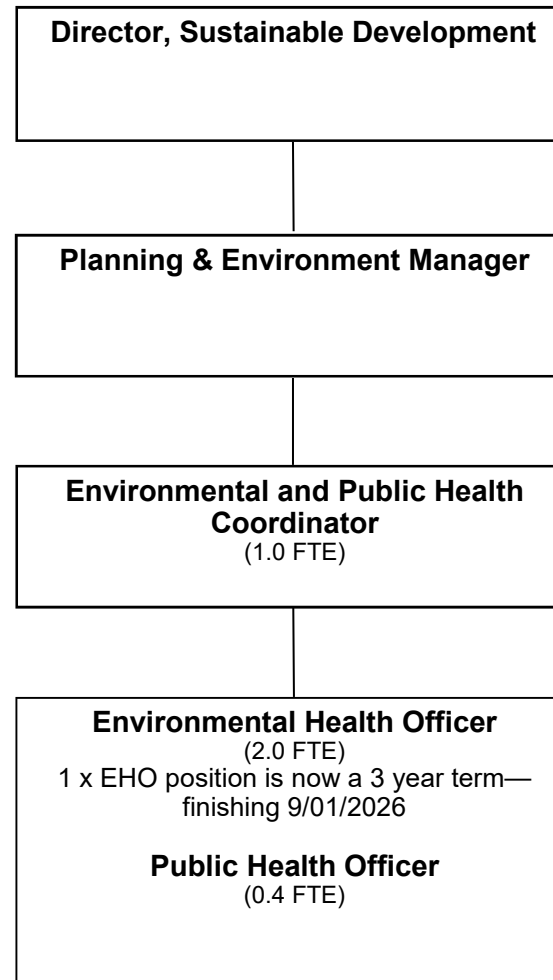


Figure 11

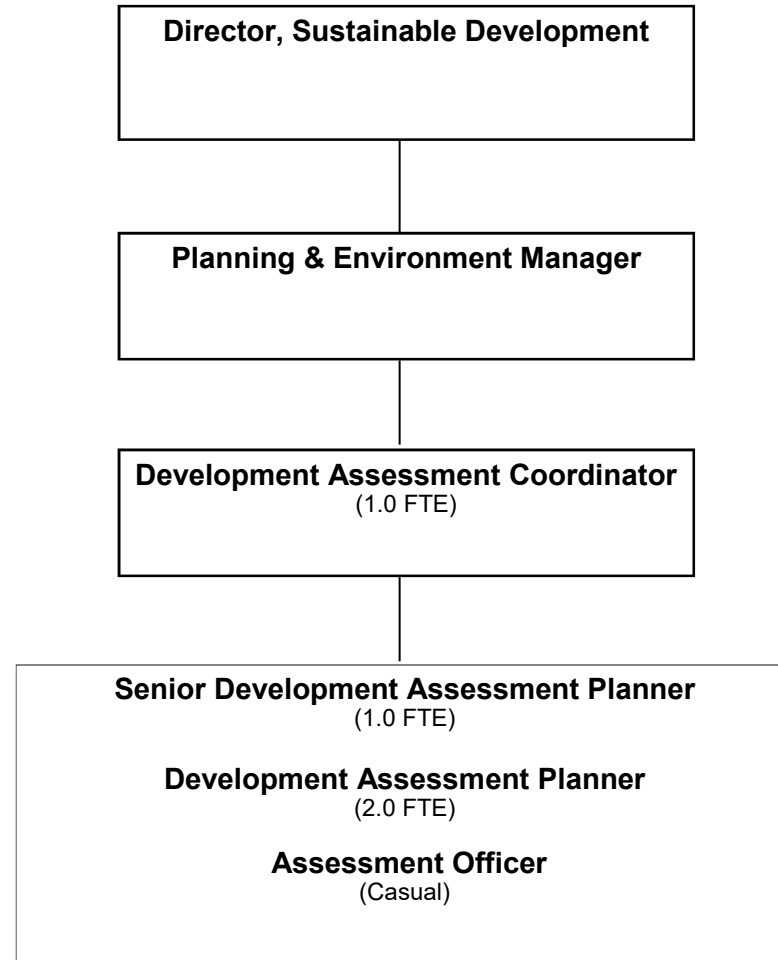
Sustainable Development

(Planning, Environment & Health)



Sustainable Development

(Planning, Environment and Health—Continued)



Sustainable Development

(Planning, Environment and Health—Continued)

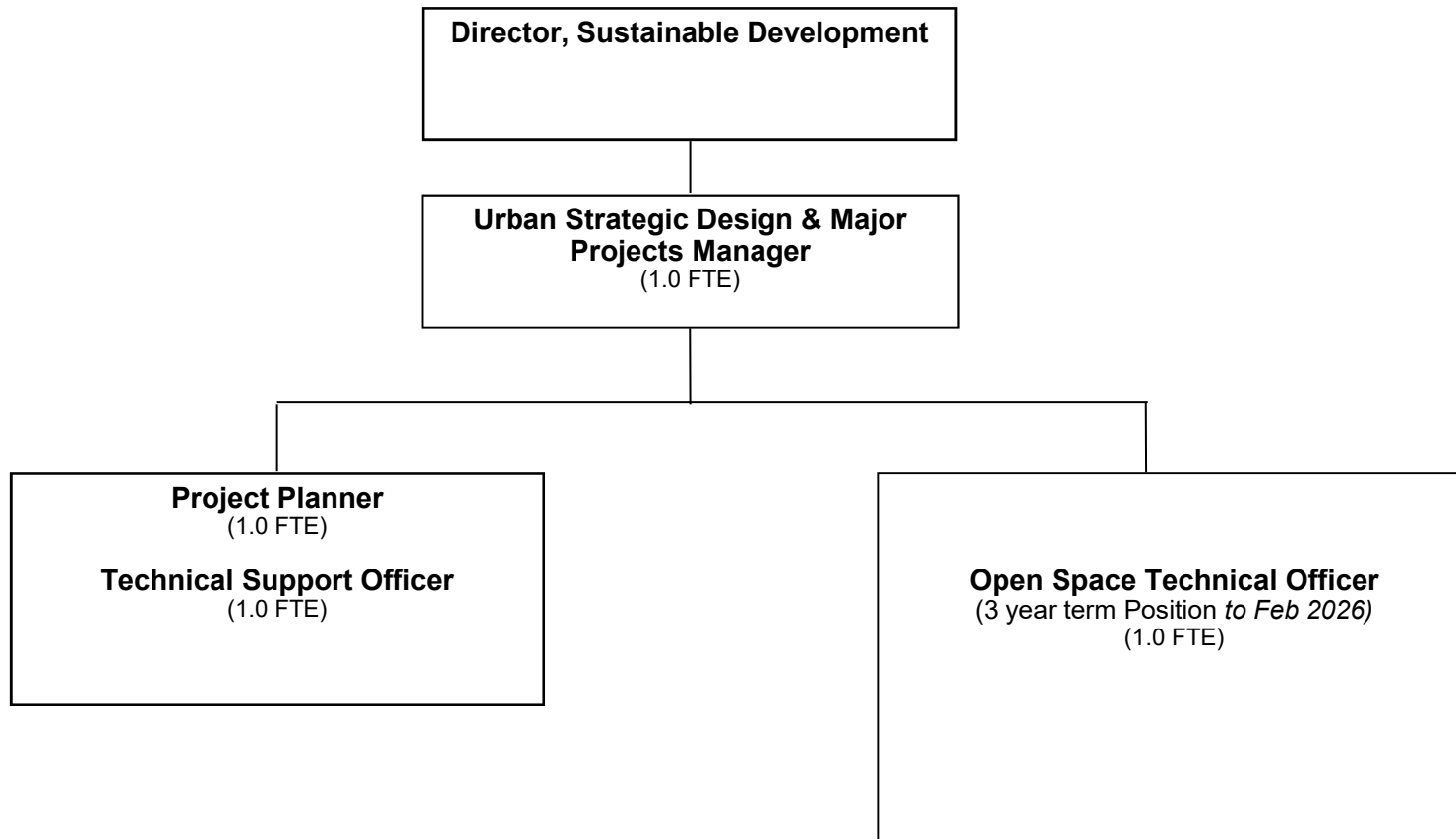
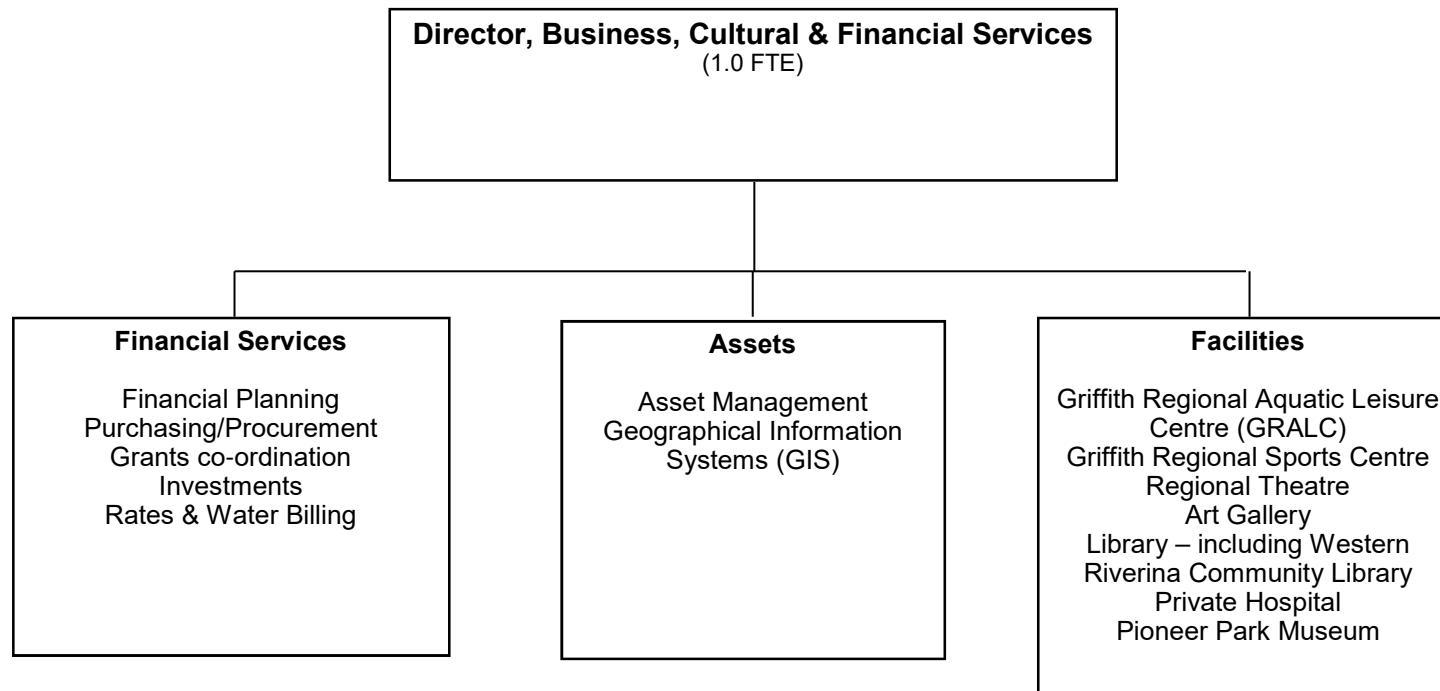


Figure 14

Business, Cultural & Financial Services



Business, Cultural & Financial Services

(Financial Services)

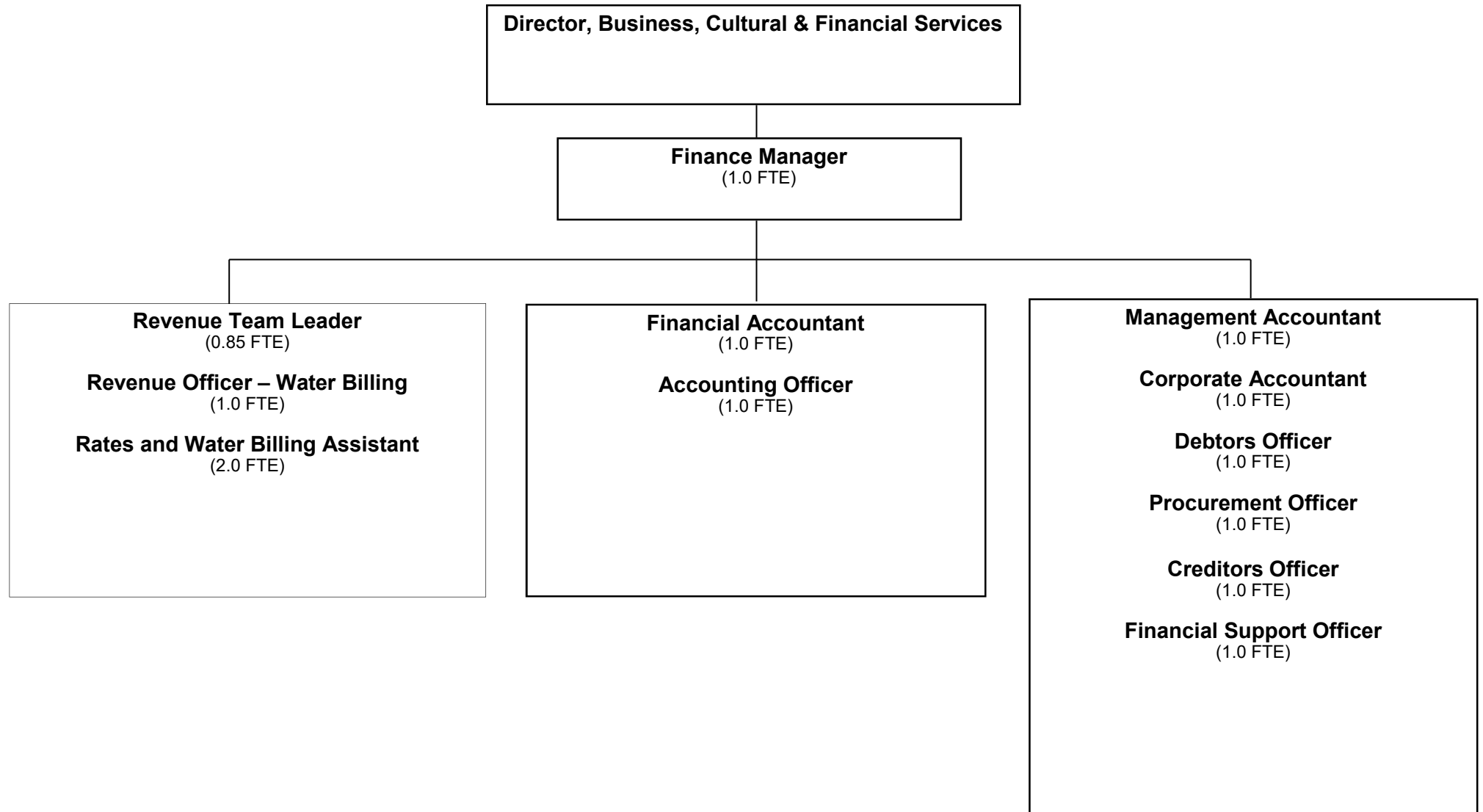
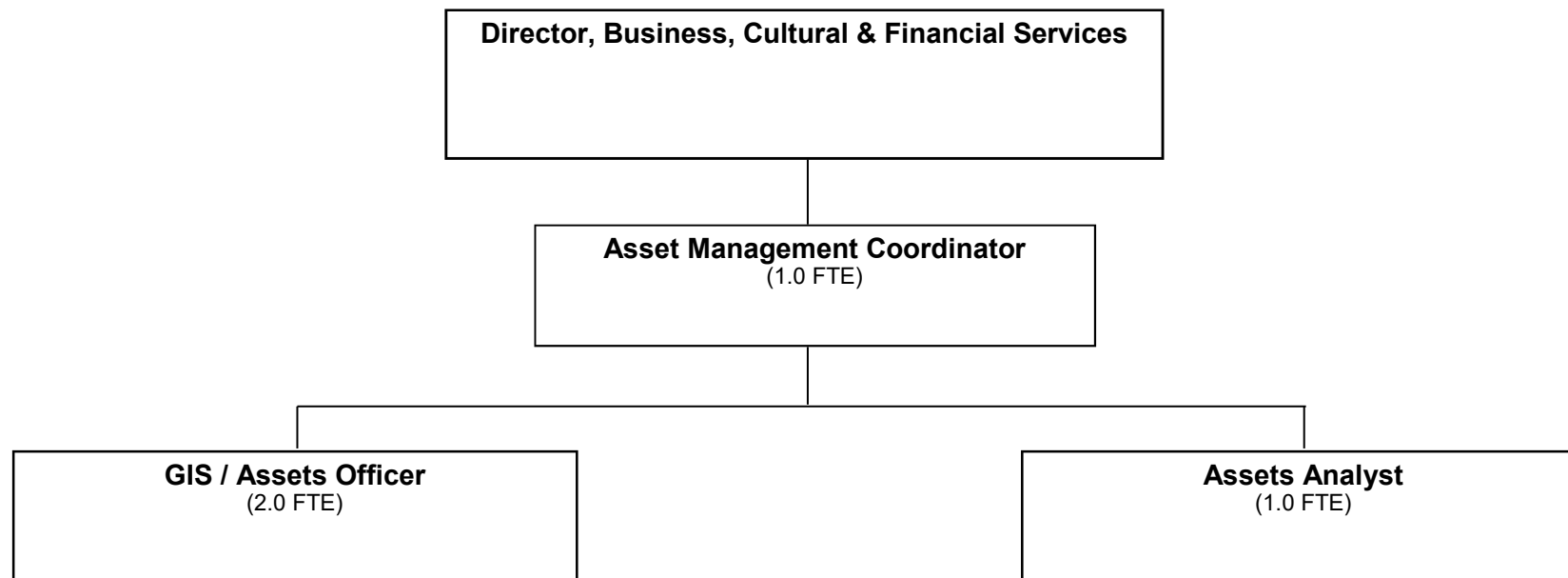


Figure 16

Business, Cultural & Financial Services (Assets)



Business, Cultural & Financial Services (Facilities—Library)

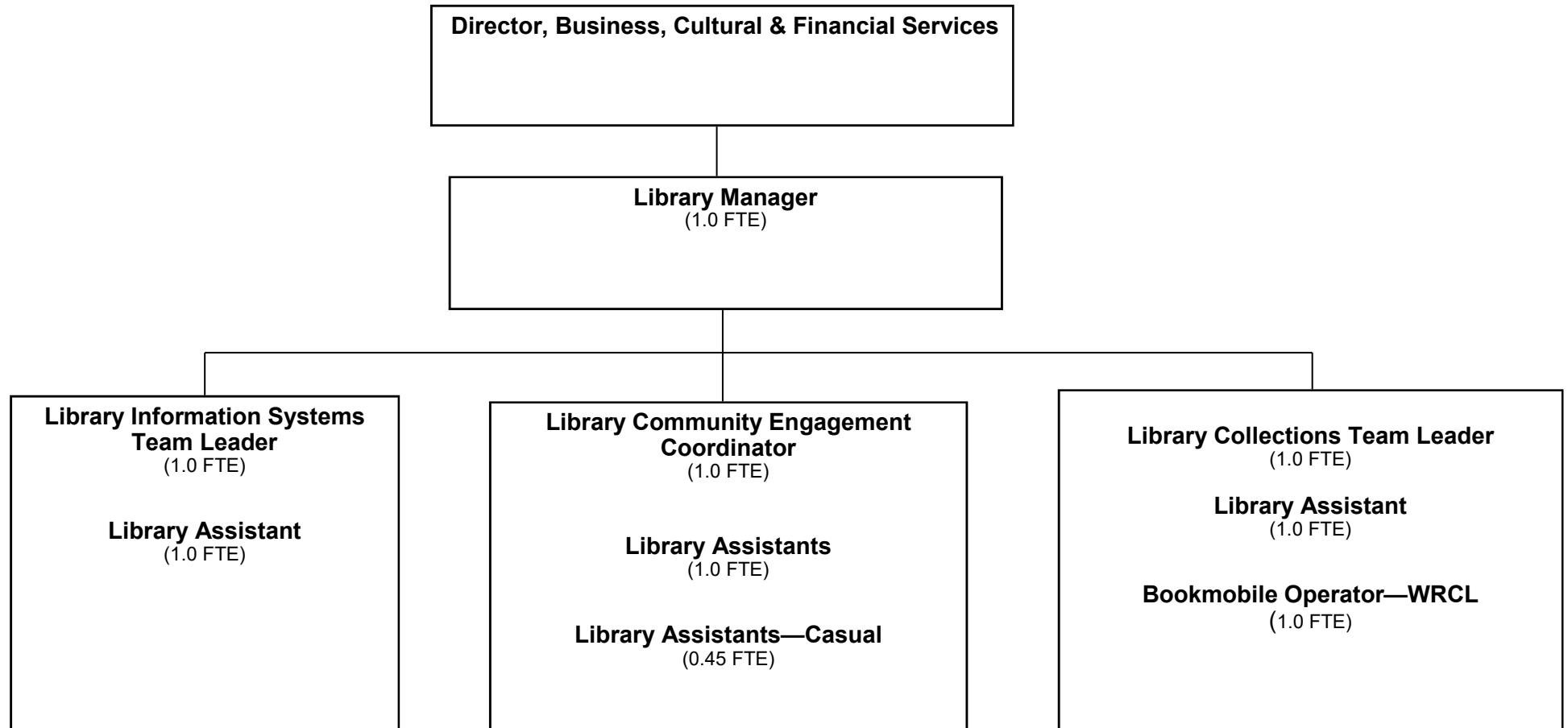
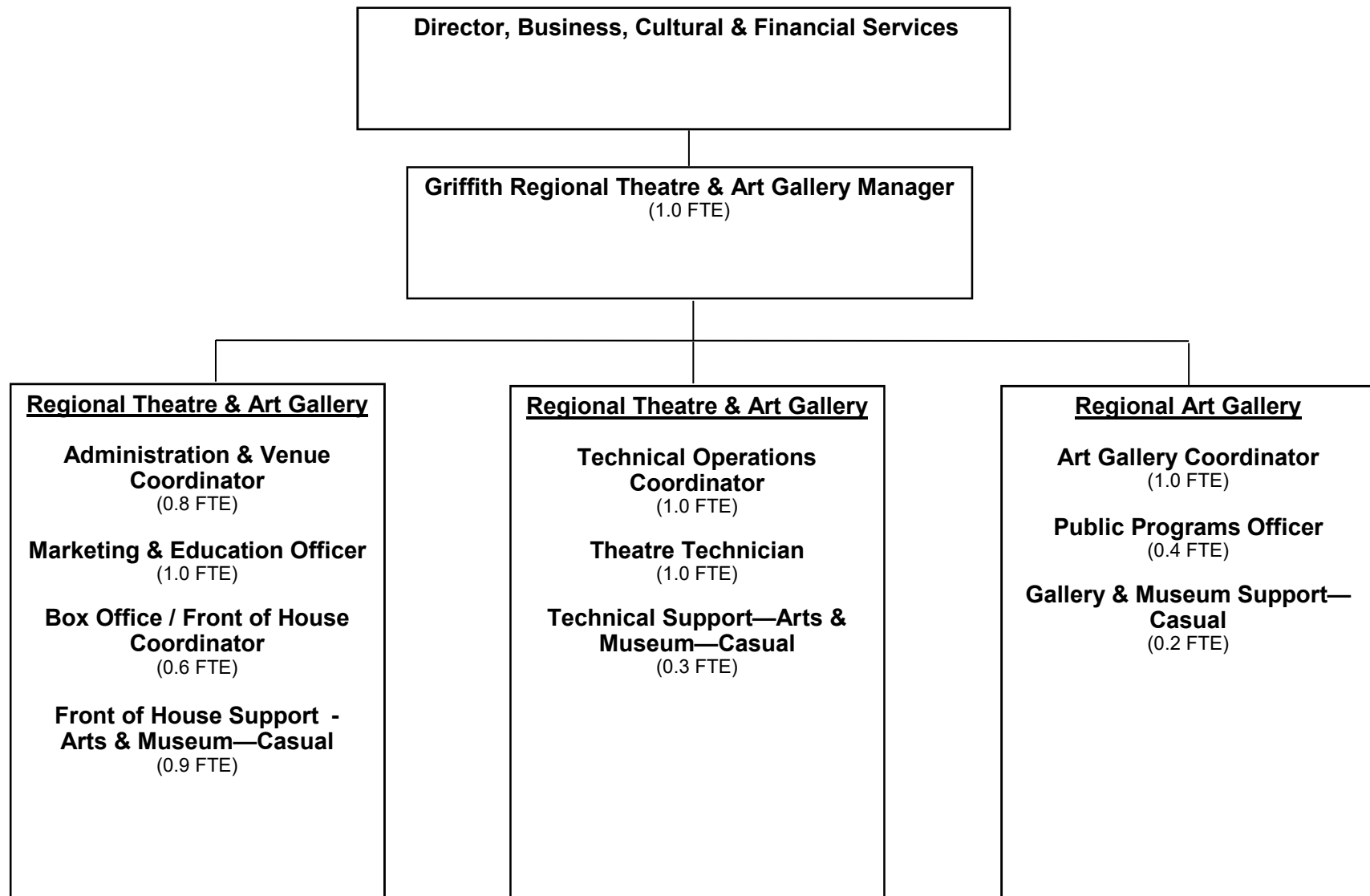


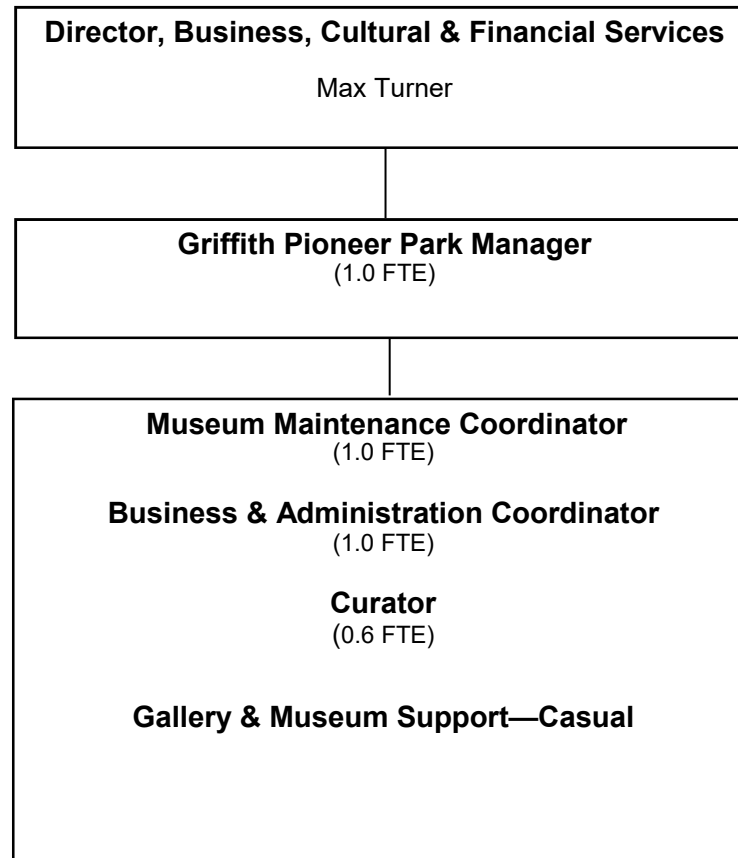
Figure 18

Business, Cultural & Financial Services

(Facilities—Theatre, Art Gallery & Museum)



Business, Cultural & Financial Services (Facilities - Pioneer Park)



Business, Cultural & Financial Services

(Facilities - Griffith Regional Sports Centre)



Business, Cultural & Financial Services (Facilities - GRALC)

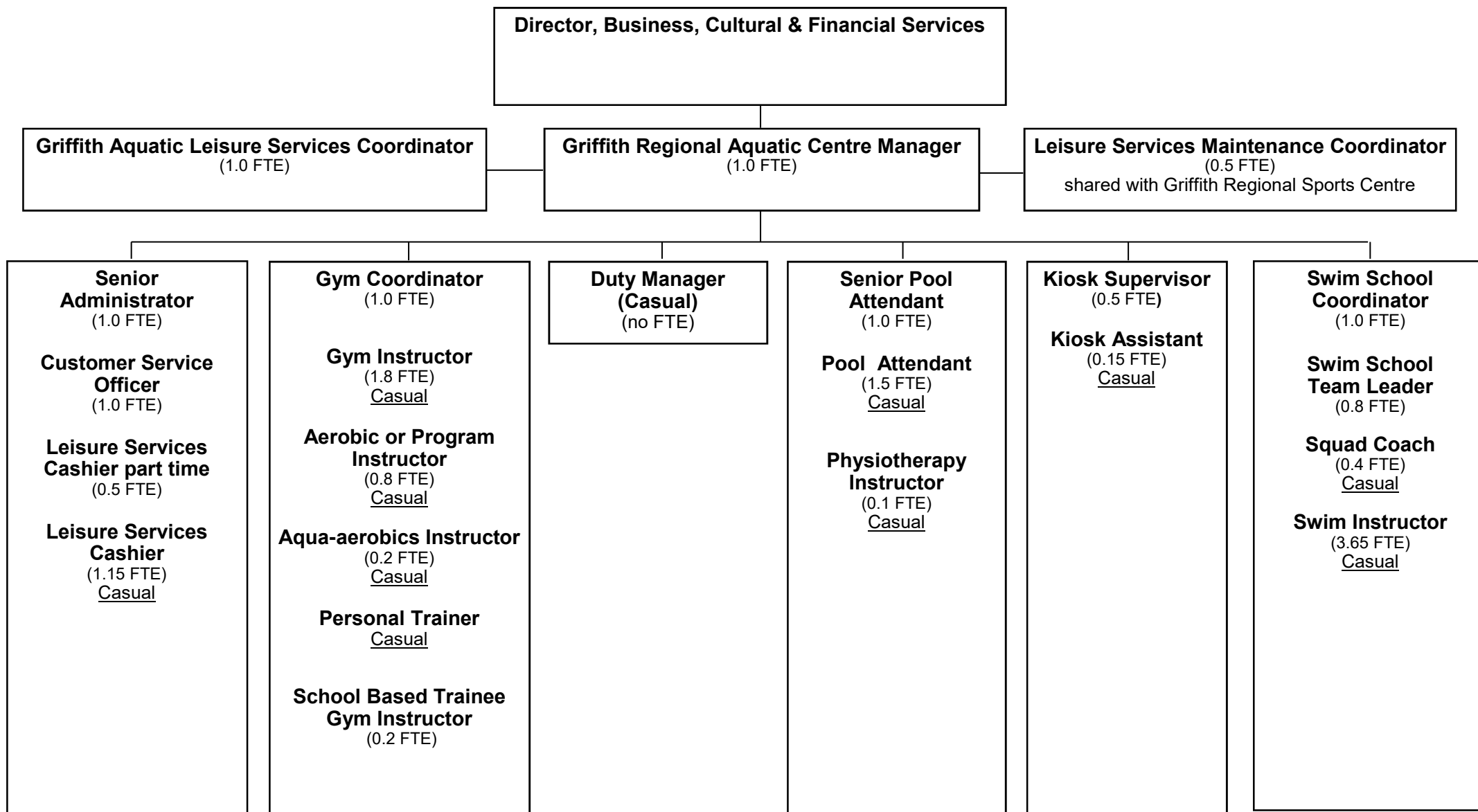
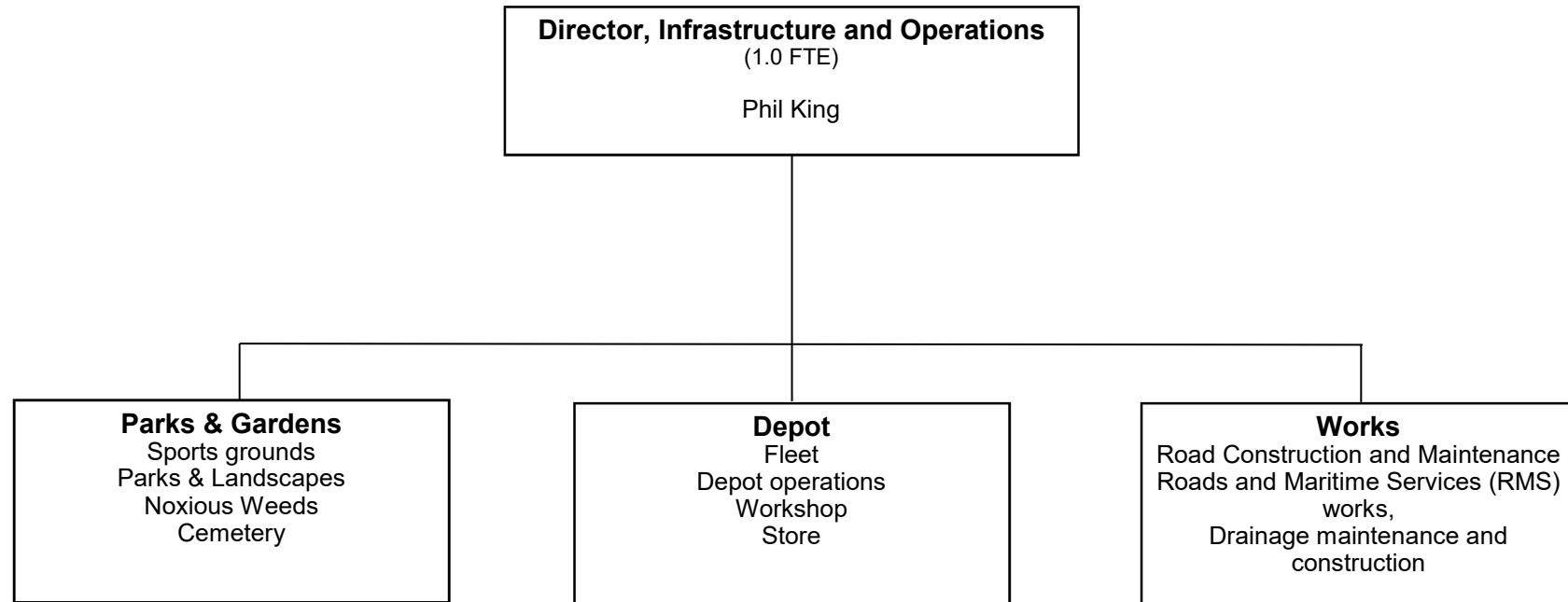
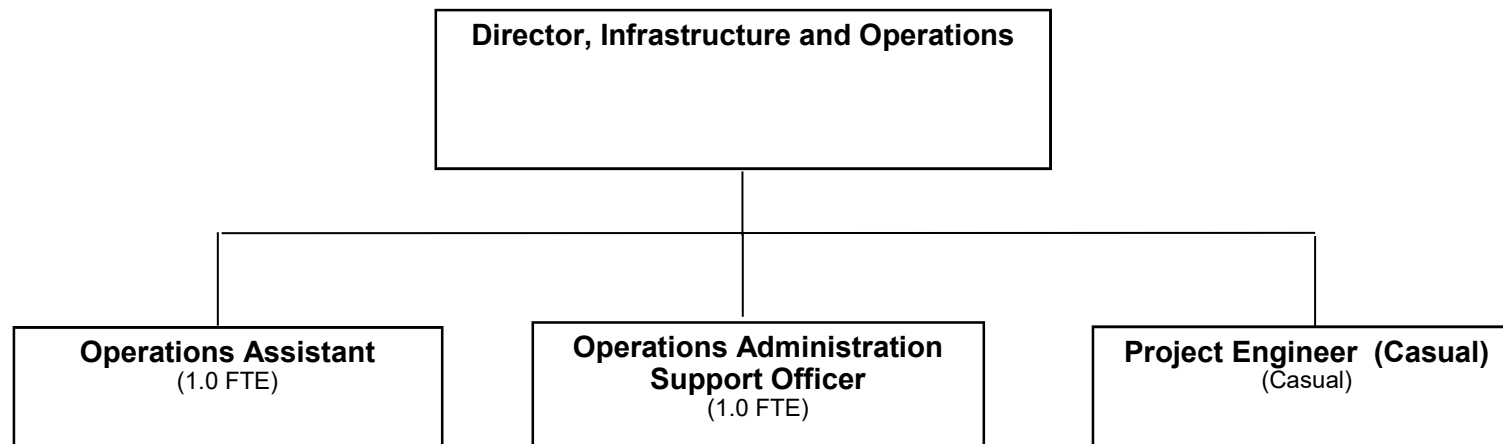


Figure 22

Infrastructure and Operations



Infrastructure and Operations



Infrastructure and Operations (Parks and Gardens)

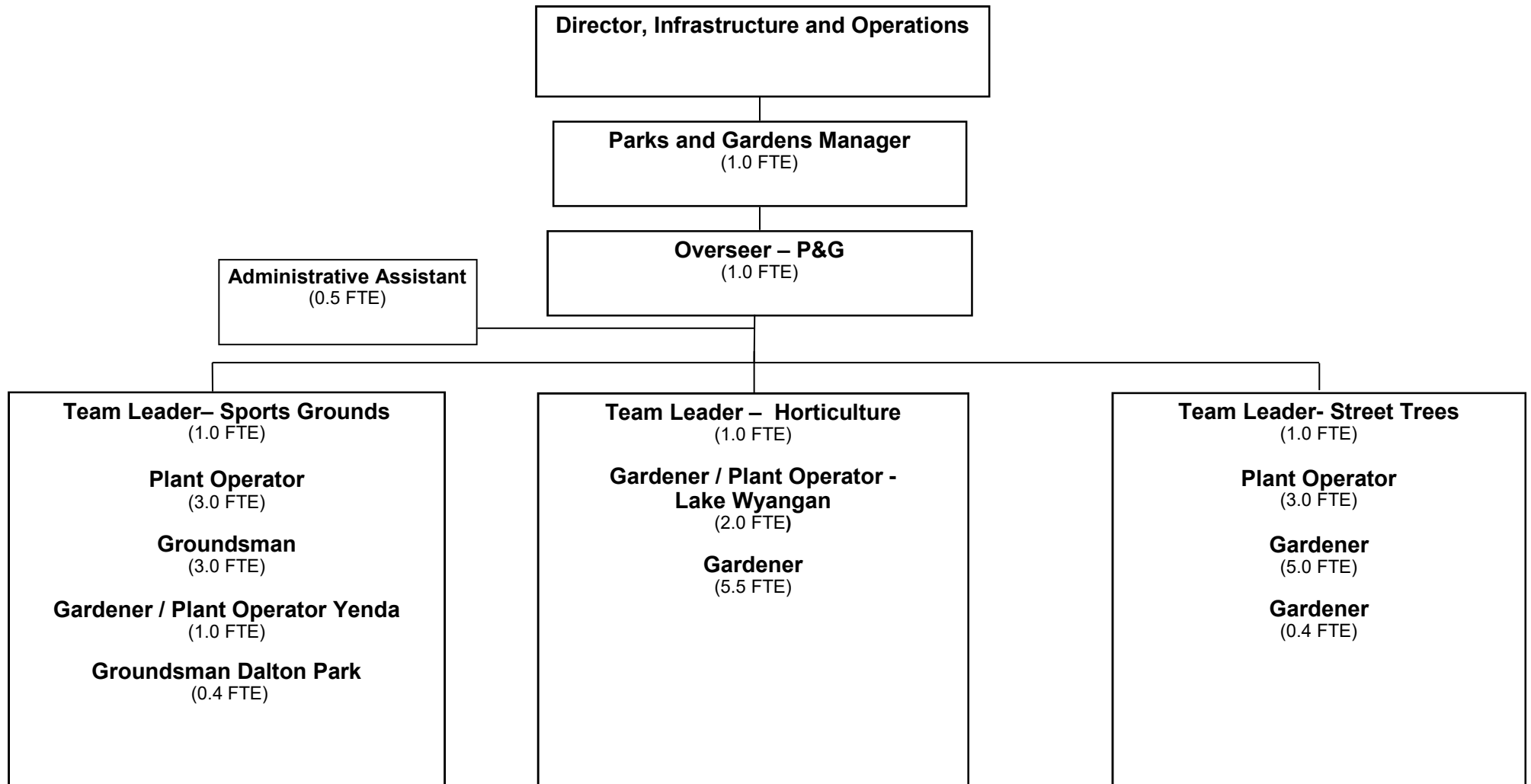
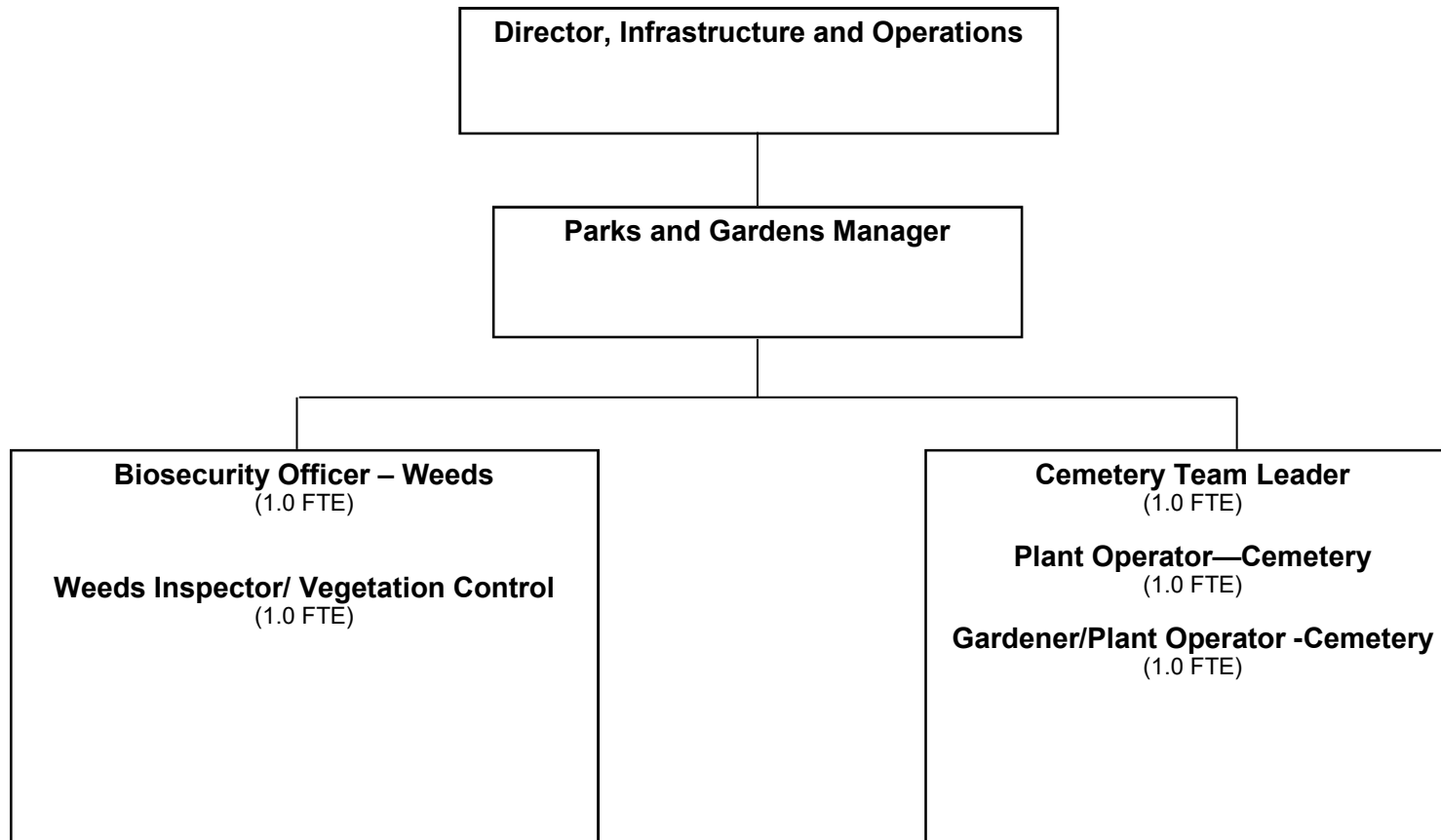
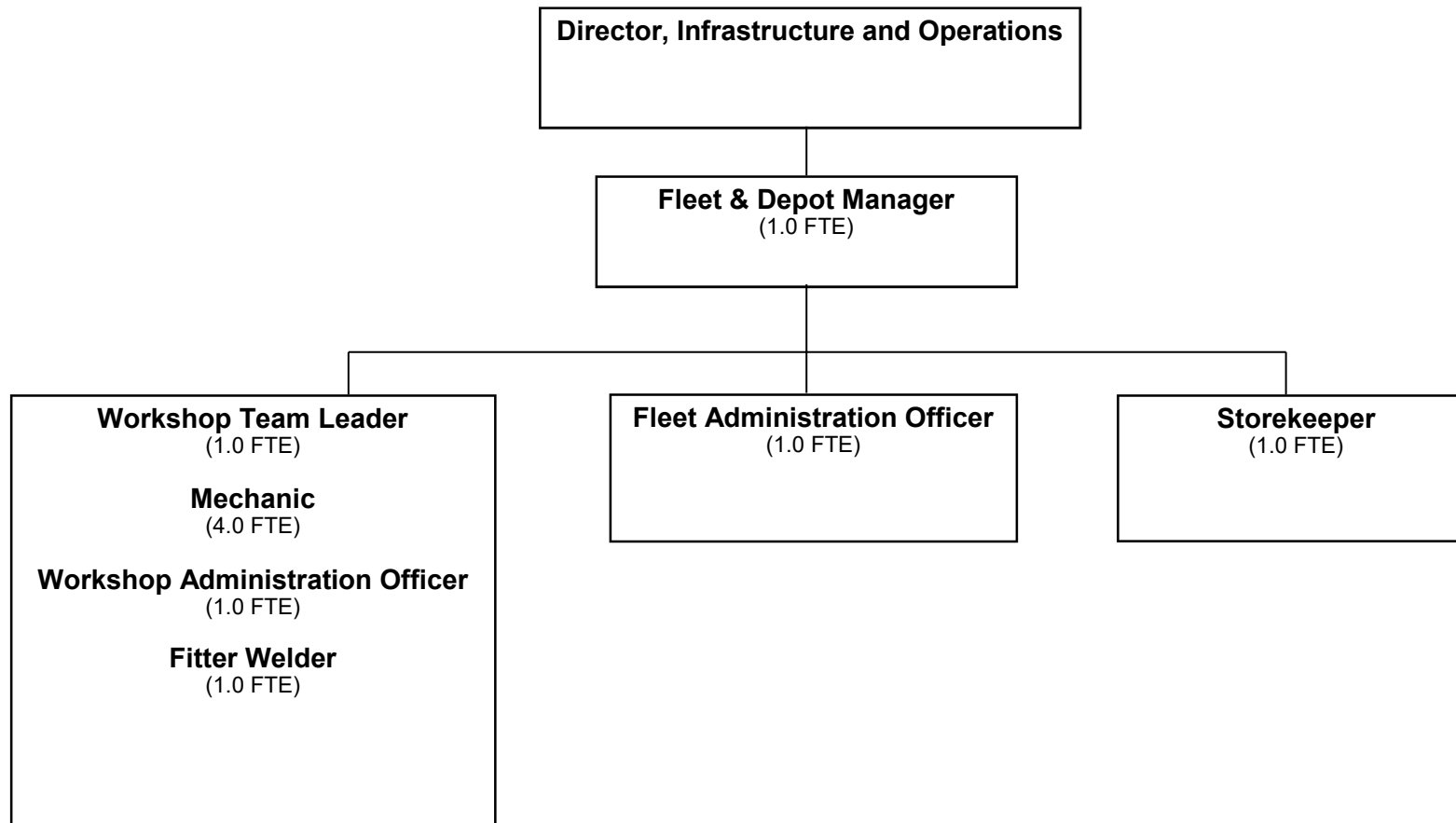


Figure 25

Infrastructure and Operations (Parks and Gardens)



Infrastructure and Operations (Depot)



Infrastructure and Operations (Works)

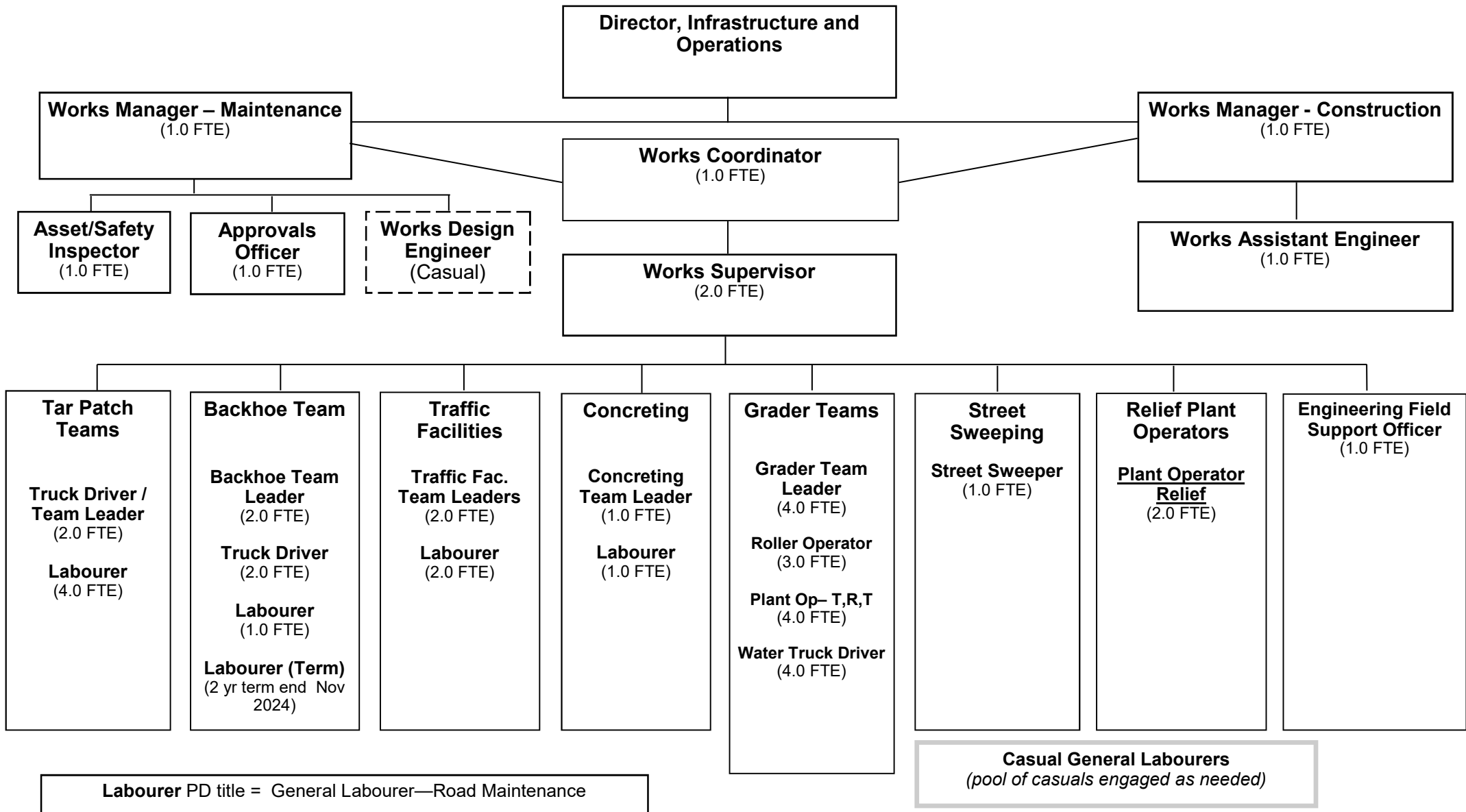
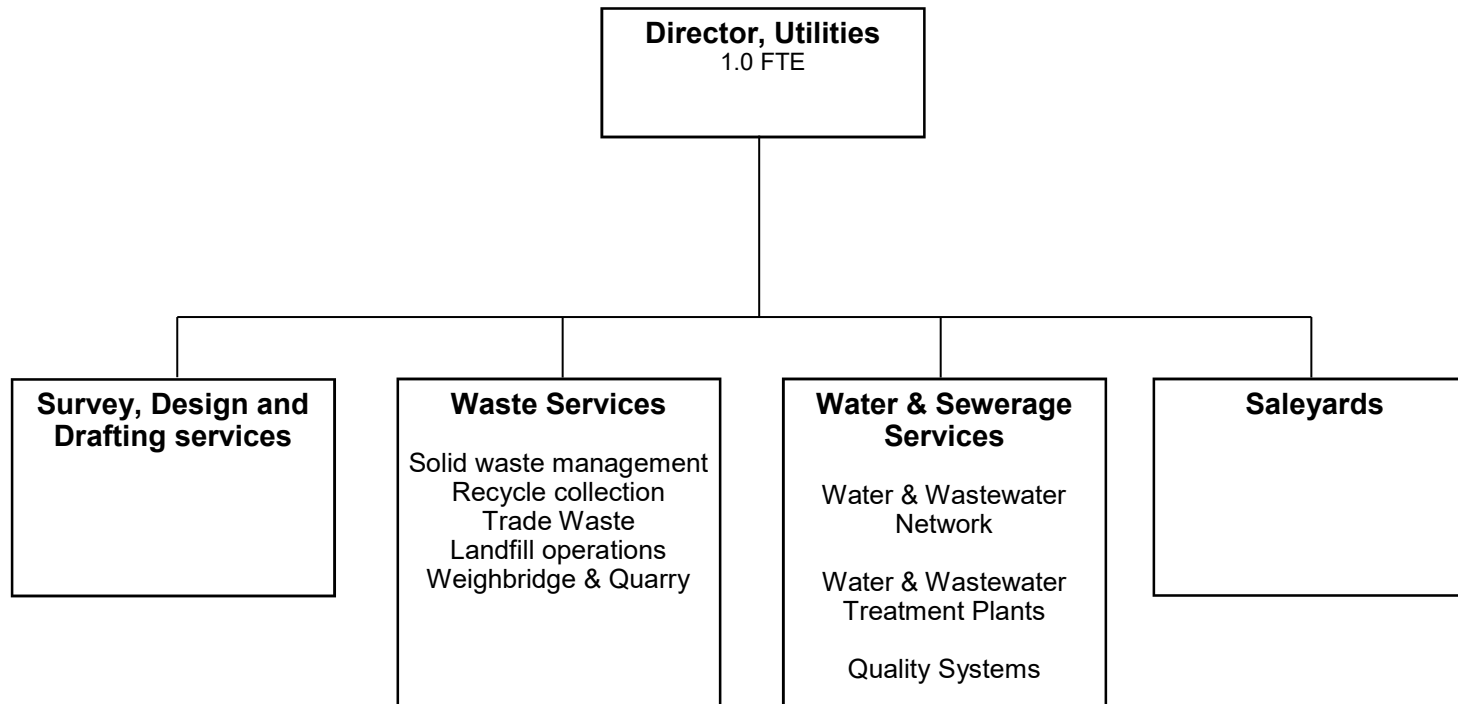


Figure 28

Utilities Directorate



Utilities

(Survey, Design and Drafting Services)

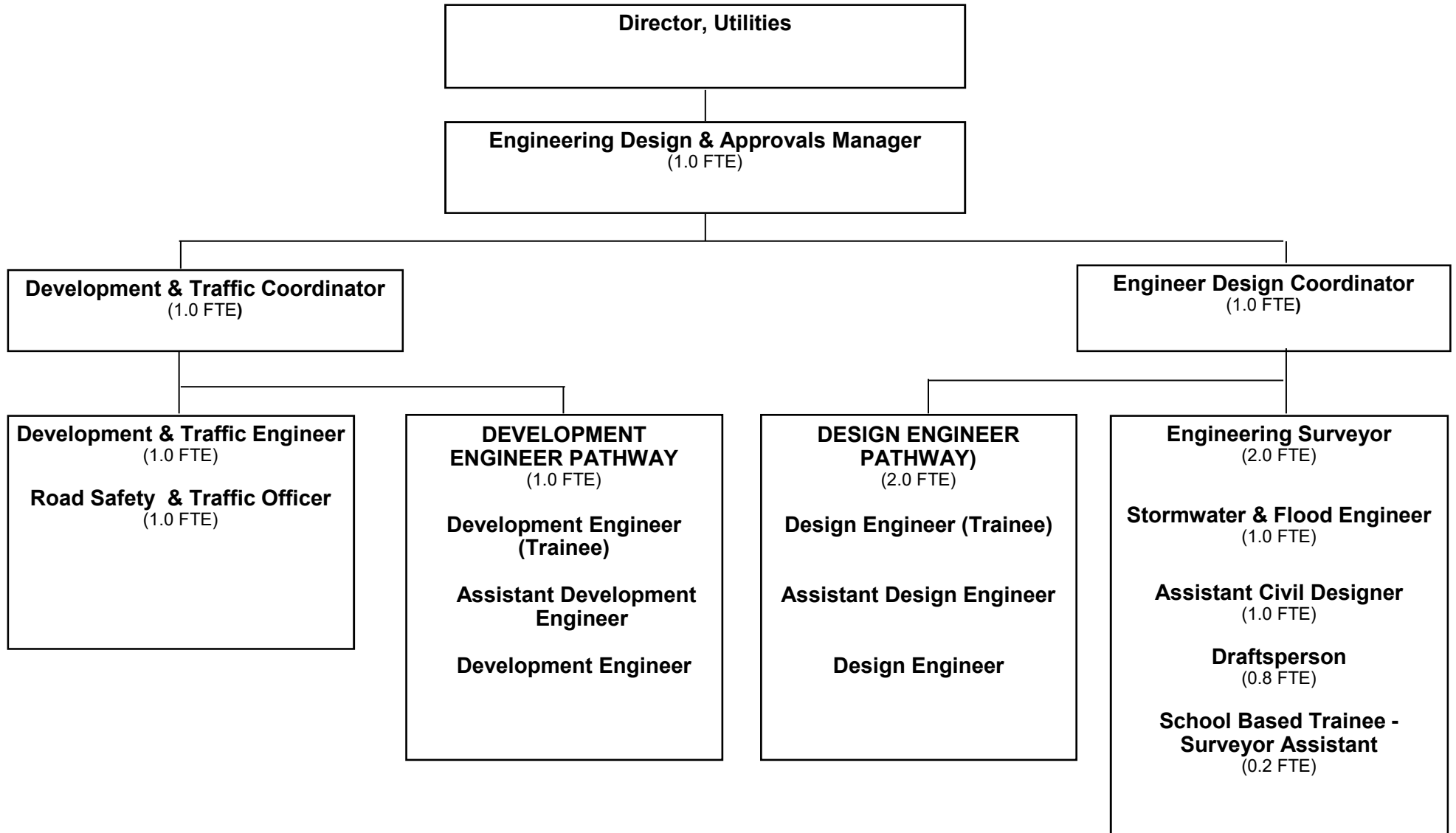
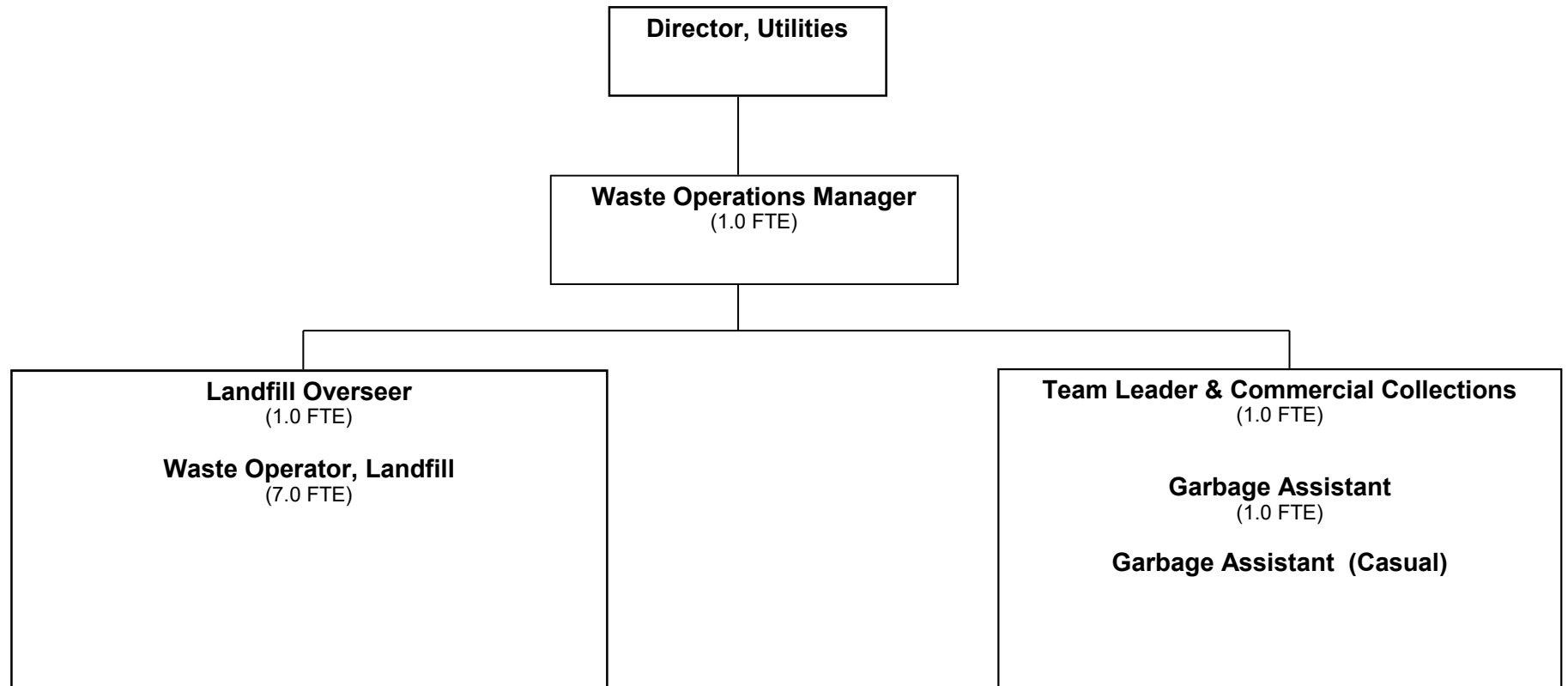


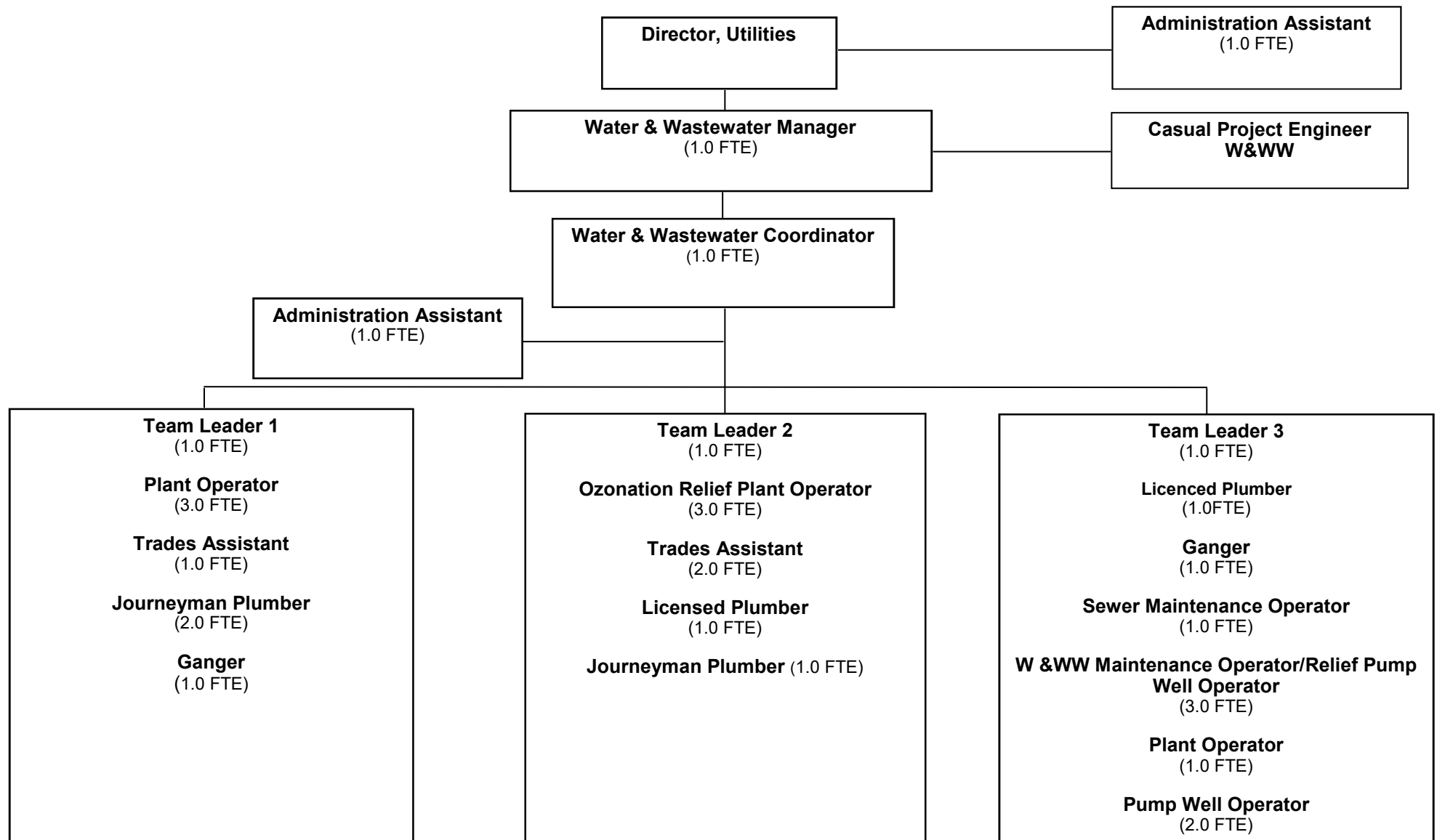
Figure 30

Utilities (Waste Services)



Utilities

(Water & Sewerage Services)



Utilities

(Water & Sewerage Services—Continued)

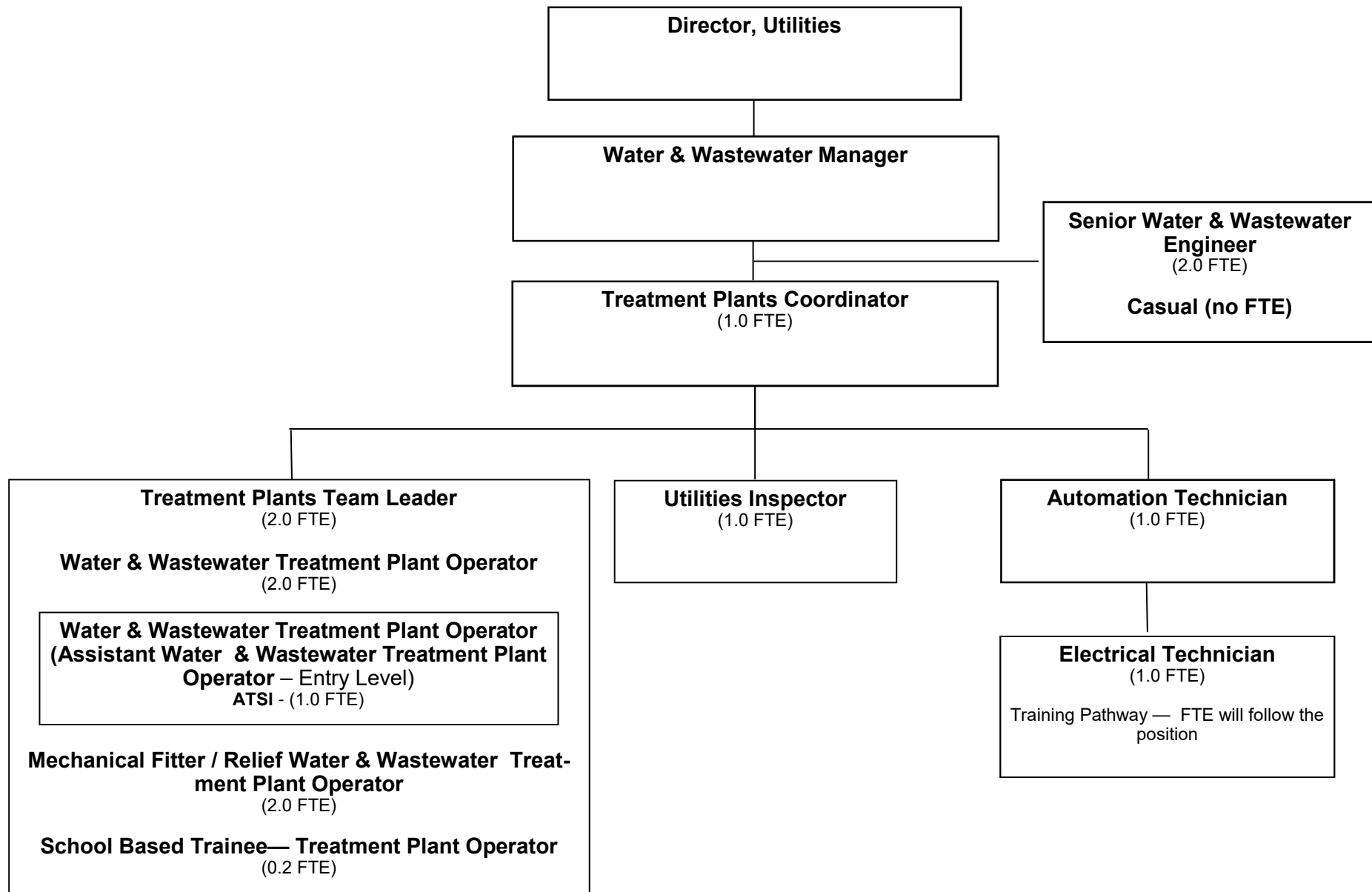
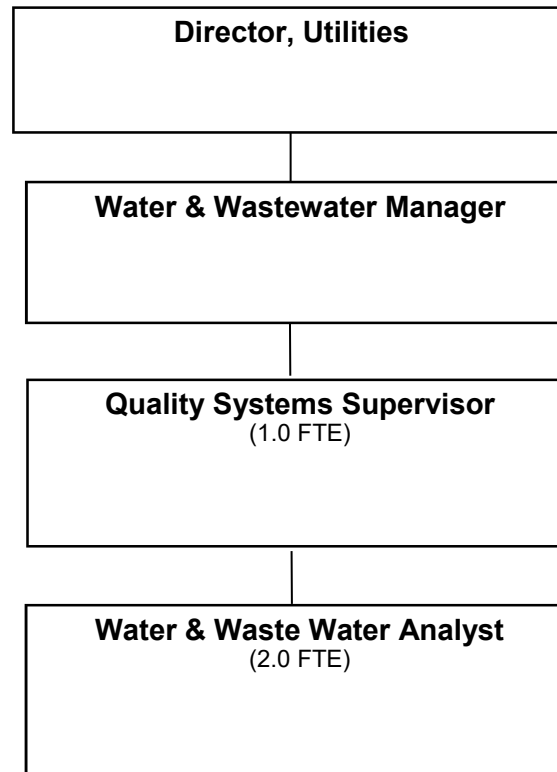


Figure 33

Utilities

(Water & Sewerage Services—Continued)



Utilities (Saleyards)

